

CLASSIC: NEUTRAL WHITE



CLASSIC: GRAPHITE



CLASSIC: BLACK COFFEE



Low thermal inertia



Low water content



Versatility



Easy to stock and install



16 bar Maximum working pressure



Available in 8 colours

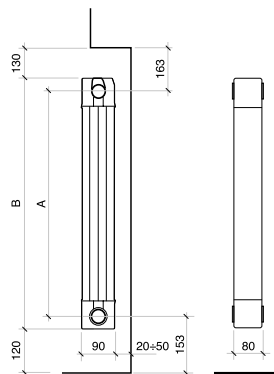


Standard supply	3, 4, 5, 6 sections
Colours	see colors table
Maximum working pressure	16 bar
Test pressure	24 bar
Included in the package	Water diaphragm (retainer cap)

Combinable with the models
Blitz Super B4 coloured

All models **Garda S/90** are guaranteed **10 years** from installation date on manufacturing faults, provided that the installation has been performed in compliance with the current norms and respecting the instructions relating to the installation, the correct use and the correct maintenance as illustrated on this catalogue.

Model	Heat output					
	ΔT 20	ΔT 30	ΔT 40	ΔT 50	ΔT 60	ΔT 70
	W/sect.	W/sect.	W/sect.	W/sect.	W/sect.	W/sect.
900	52,3	90,9	134,4	182,0	233,3	287,7
1000	55,9	97,2	143,9	195,0	250,0	308,5
1200	64,1	111,3	164,6	223,0	285,8	352,5
1400	71,9	124,8	184,6	250,0	320,3	395,1
1600	77,5	135,9	202,4	275,0	354,8	439,2
1800	86,5	150,0	221,6	300,0	384,2	473,6
2000	90,7	159,5	237,9	324,0	418,0	518,0



MEASURES EXPRESSED IN MILLIMETRES

Model for colour CLASSIC	Code (*)	Depth	Height	Centre distance	Length	Connection diameters	Water capacity	Exponent	Coefficient	Price €
		mm	(B) mm	(A) mm	mm	inches	litres/sect.	n	Km	
900	81AGSxx4	90	966	900	80	G1	0,43	1,3605	0,8886	36,14
1000	81BGSxx4	90	1066	1000	80	G1	0,47	1,3630	0,9426	37,57
1200	81CGSxx4	90	1266	1200	80	G1	0,55	1,3610	1,0864	41,86
1400	81DGSxx4	90	1466	1400	80	G1	0,62	1,3600	1,2227	47,71
1600	81EGSxx4	90	1666	1600	80	G1	0,70	1,3843	1,2260	50,57
1800	81FGSxx4	90	1866	1800	80	G1	0,78	1,3570	1,4846	56,29
2000	81GGSxx4	90	2066	2000	80	G1	0,86	1,3905	1,4083	62,14

Model for colour SPECIAL	Code (*)	Depth	Height	Centre distance	Length	Connection diameters	Water capacity	Exponent	Coefficient	Price €
		mm	(B) mm	(A) mm	mm	inches	litres/sect.	n	Km	
900	81AGSxx4	90	966	900	80	G1	0,43	1,3605	0,8886	40,31
1000	81BGSxx4	90	1066	1000	80	G1	0,47	1,3630	0,9426	41,91
1200	81CGSxx4	90	1266	1200	80	G1	0,55	1,3610	1,0864	46,69
1400	81DGSxx4	90	1466	1400	80	G1	0,62	1,3600	1,2227	53,22
1600	81EGSxx4	90	1666	1600	80	G1	0,70	1,3843	1,2260	56,41
1800	81FGSxx4	90	1866	1800	80	G1	0,78	1,3570	1,4846	62,79
2000	81GGSxx4	90	2066	2000	80	G1	0,86	1,3905	1,4083	69,31

Maximum working pressure: 1600 kpa (16 bar)

 Characteristic equation of the model $\Phi = Km \Delta T^n$

Stated heat output values are in accordance with European Standard EN 442-1:2014 and certified by Cetiat - Notified body No. 1623.

(*) Enter the colour code instead of xx. After the last digit (4) add the number of elements required.

 For example, to request the **Garda S/90(81AGSxx4) 900 Silver colour of 4 elements**, the code would be **81AGS + 07 + 404**

CLASSIC						SPECIAL
NEUTRAL WHITE	SILVER	GRAPHITE	SLATE GREY	BLACK COFFEE	BRONZE	HAMMERED BLACK
Cod. 06	Cod. 07	Cod. 3R	Cod. 3B	Cod. 3V	Cod. 08	Cod. 17

Item	Description	Colour	Code	Price €
	1/2" plug and fixing kit - Colour: ACCORDING TO THE CHOICE 2 Rh G 1/2" adapters; 2 Lh G 1/2" adapters; 4 retaining gaskets for model Blitz/Simun; 4 retaining gaskets for model Garda/Ledro; 1/2" manual air-purging valve with gasket; 1 Rh G 1" blind plug; 1 Lh G 1" blind plug; 4 fixing brackets.	NEUTRAL WHITE	55014906	52,53
		SILVER	55014907	
		BRONZE	55014908	
		HAMMERED BLACK	55014917	
		SLATE GREY	5501493B	
		GRAPHITE	5501493R	
		BLACK COFFEE	5501493V	
	Rubber lockshield plug (water diaphragm)	-	521011	0,56
	A 32/1 O-ring seal for nipples, plugs and adapters	-	530102	0,62
	A 33/1 Nipple for home furnishing radiators	-	521012	0,49

