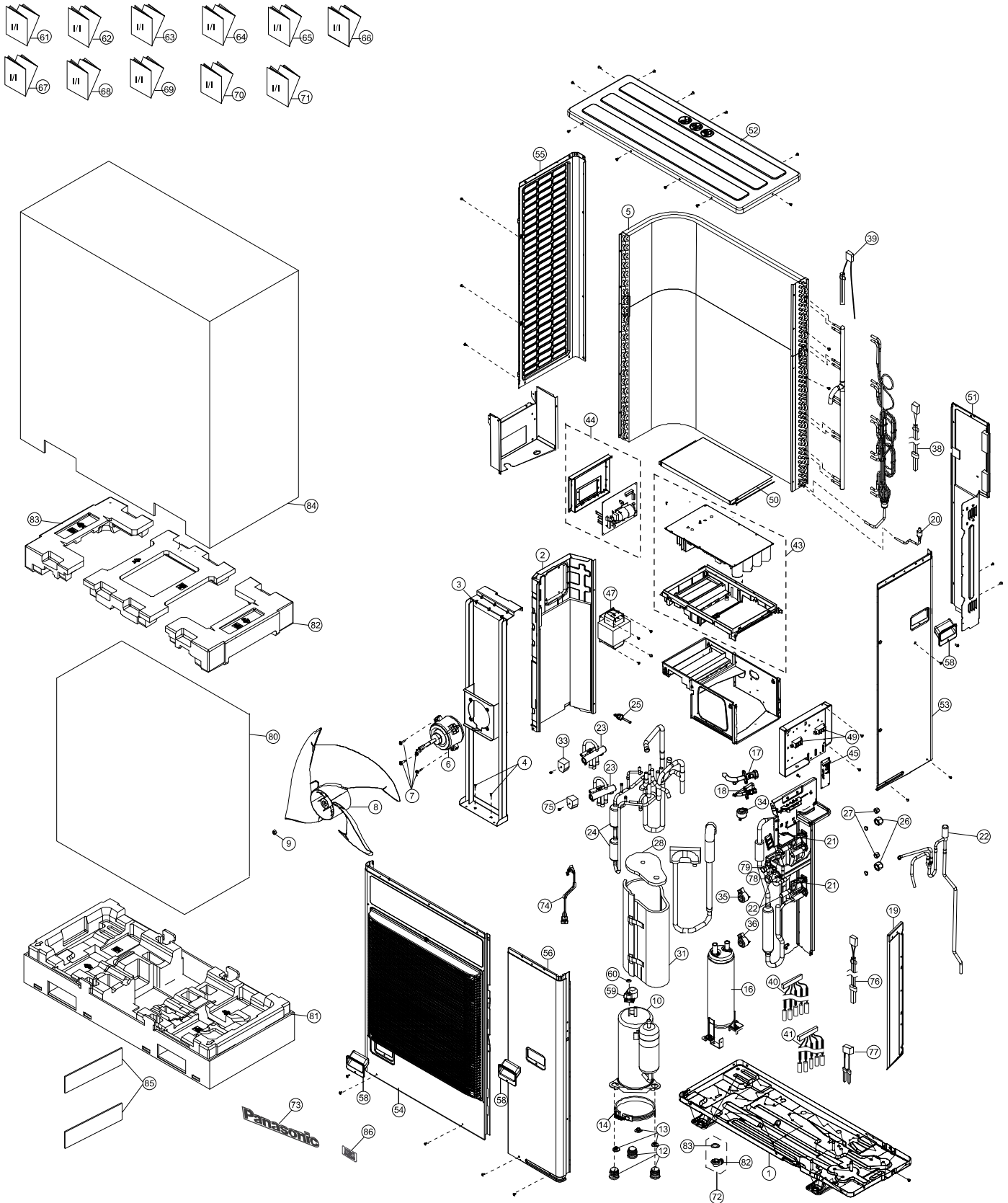


32.3 CU-2WZ71YBE5



Note
 The above exploded view is for the purpose of parts disassembly and replacement.
 The non-numbered parts are not kept as standard service parts.

SAFETY	REF. NO.	DESCRIPTION & NAME	QTY.	CU-2WZ71YBE5	REMARK
	1	BASE PAN ASS'Y	1	CWD52K1345A	
	2	SOUND - PROOF BOARD	1	CWH151367	
	3	FAN MOTOR BRACKET	1	ACXD54K02270	
	4	SCREW - BRACKET FAN MOTOR	2	CWH551040J	
	5	CONDENSER COMPLETE	1	ACXB32C25400	
⚠	6	FAN MOTOR	1	L6CBYYL0098	
	7	SCREW - FAN MOTOR MOUNT	4	CWH551323	
	8	PROPELLER FAN ASSY	1	CWH03K1075	
	9	NUT	1	CWH561092	
⚠	10	COMPRESSOR	1	9KD240XBB21	
	12	BUSHING - COMPRESSOR MOUNT	3	CWH50055	
	13	NUT - COMPRESSOR MOUNT	3	CWH561049	
⚠	14	CRANKCASE HEATER	1	CWA341093	
	16	ACCUMULATOR	1	CWB131064	
	17	3-WAYS VALVE (GAS)	1	CWB011769	
	18	3-WAY VALVE (LIQUID)	1	CWB011770	
	19	HOLDER COUPLING	1	CWH351262	
	20	STRAINER	1	CWB11061	
	21	STRAINER	2	ACXB11-01560	
	22	EXPANSION VALVE	3	CWB051029	
	23	4-WAYS VALVE	2	ACXB00-01470	
	24	DISCHARGE MUFFLER	2	ACXB12-00650	
⚠	25	HEATING PRESSURE SWITCH	1	ACXA10-00640	
	26	FLARE NUT (1/4)	2	CWT251030	
	27	FLARE NUT (3/8)	2	CWT251032	
	28	SOUND PROOF MATERIAL	1	CWG302804	
	31	SOUND PROOF MATERIAL	1	CWG302801	
⚠	33	V-COIL CO. (4 WAY VALVE CN-HOT1)	1	CWA43C2586	
⚠	34	V-COIL CO. (EXPAND VALVE - WHITE CN-STM1)	1	CWA43C2587	
⚠	35	V-COIL CO. (EXPAND VALVE - YELLOW CN-STM2)	1	CWA43C2588	
⚠	36	V-COIL CO. (EXPAND VALVE - BLUE CN-STM3)	1	CWA43C2589	
⚠	38	SENSOR - COMPLETE (DEFROST TEMP SENSOR CN-TH2)	1	CWA50C3087	
⚠	39	SENSOR - COMPLETE (OUTDOOR TEMP SENSOR CN-TH1)	1	ACXA50C00930	
⚠	40	SENSOR - COMPLETE (CN-TH4)	1	ACXA50C18290	
⚠	41	SENSOR - COMPLETE (CN-TH3)	1	ACXA50C18280	
⚠	43	ELECTRONIC CONTROLLER - MAIN	1	ACXA73C83730R	
⚠	44	ELECT. CONTROLLER - NOISE FILTER	1	ACXA73C29300	
⚠	45	ELECTRONIC CONTROLLER (DISPLAY)	1	CWA747223	
⚠	47	REACTOR	1	G0C602J00013	
⚠	49	TERMINAL BOARD ASS'Y (1,2,3)	2	CWA28K1196	

SAFETY	REF. NO.	DESCRIPTION & NAME	QTY.	CU-2WZ71YBE5	REMARK
	50	CONTROL BOARD COVER (TOP PCB)	1	CWH131613	
	51	CABINET REAR PLATE - COMPLETE	1	ACXE02C01670	
	52	CABINET TOP PLATE	1	CWE03C1150	
	53	CABINET SIDE PLATE - COMPLETE	1	ACXE04C08390	
	54	CABINET FRONT PLATE	1	CWE06C1475	
	55	CABINET SIDE PLATE	1	CWE041734A	
	56	CABINET FRONT PLATE - COMPLETE	1	CWE06C1476	
	58	HANDLE	3	CWE161021	
	59	TERMINAL COVER	1	CWH171039A	
	60	NUT - TERMINAL COVER	1	CWH7080300J	
	61	INSTALLATION INSTRUCTION	1	ACXF60-45790	
	62	INSTALLATION INSTRUCTION	1	ACXF60-45800	
	63	INSTALLATION INSTRUCTION	1	ACXF60-45810	
	64	INSTALLATION INSTRUCTION	1	ACXF60-45820	
	65	INSTALLATION INSTRUCTION	1	ACXF60-45830	
	66	INSTALLATION INSTRUCTION	1	ACXF60-45840	
	67	INSTALLATION INSTRUCTION	1	ACXF60-45850	
	68	INSTALLATION INSTRUCTION	1	ACXF60-45860	
	69	INSTALLATION INSTRUCTION	1	ACXF60-45870	
	70	INSTALLATION INSTRUCTION	1	ACXF60-45880	
	71	INSTALLATION INSTRUCTION	1	ACXF60-45890	
	72	ACCESSORY CO. (DRAIN ELBOW)	1	ACXH82C21740	
	73	BADGE PANASONIC	1	CWE373439	
	74	LEAD WIRE - COMPRESSOR	1	CWA68C1395	
	75	V-COIL CO. (4 WAY VALVE CN-HOT2)	1	ACXA43C07380	
	76	SENSOR - COMPLETE (CN-TANK)	1	ACXA50C18300	
	77	SENSOR - COMPLETE (CN-TH5)	1	ACXA50C18310	
	78	3-WAYS VALVE	1	ACXB01-05870	
	79	3-WAYS VALVE	1	ACXB01-05880	
	80	BAG	1	ACXG86-05740	
	81	BASE BOARD - COMPLETE	1	ACXG62C02470	
	82	SHOCK ABSORBER	2	ACXG70-14500A	
	83	SHOCK ABSORBER	1	ACXG70-14510A	
	84	C.C. CASE	1	ACXG50-60040	
	85	MODEL LABEL	2	ACXF85-86020	
	86	INDICATION LABEL - R32	1	CWF746074	

(Note)

- All parts are supplied from PAPAMY, Malaysia (Vendor Code: 00029488).
- "O" marked parts are recommended to be kept in stock.